



Gorilla Tough
for Mining & Aggregate

www.ValleyRubber.solutions

Why Rubber?

1) Absorb Great Impact.

When the goal is reducing the shock and damaging vibration of severe impact, rubber maximizes the life of equipment and dramatically decreases your cost-per-ton.

2) Resist Severe Abrasion.

In most cases, metal surfaces just can't compete with rubber for long-term abrasion resistance.

3) Reduce Noise Emission Significantly.

Noise pollution is a key consideration of the environment and for people working on and living around job sites.

Rubber also comes in handy for dust control, weight reduction, ease of installation and corrosion resistance. Plus, it is highly customizable...

Rubber is More Durable than Steel!

In the right application – Rubber is more durable and lighter than hard steel.

Rubber can be compounded to create the properties that are needed to satisfy the product's end use. It can be made soft or hard, bendable or rigid, with countless combinations, including dual durometer which makes rubber very versatile when properly compounded. Rubber is not just for erasers anymore!

Not all Rubber is the Same.

We offer highly specific compounds to solve highly specific problems. With the variety of rubber polymers we can formulate – natural and synthetic – the possibilities are almost limitless. We only use premium-grade materials and we test every batch of our compounded stocks to specification requirements before production ever starts to give long life and protection against impact, cut, tear and abrasion.

Getting Started

Simply provide your representative with a drawing, part, or access to take measurements and we will use our team of experienced professionals to custom design a solution for you. We capture critical information on an Application Data Sheet and utilize our application specialist, technical planners and design department to begin the process of building components that will maximize your benefits in terms of efficiency, ergonomics, ease of maintenance, and cost effectiveness – providing you with custom solutions to lower your cost-per-ton!



Haul Truck Bed Liners

Valley Rubber manufactures Haul Truck Bed Liners for all size truck bodies - historically we have lined 25-ton up to 400-ton trucks. We can effectively line heated and non-heated beds, offering extreme abrasion resistance and reducing metal fatigue and stress fractures, while increasing driver comfort and reducing noise. The easy-to-install liner system is cost effective and maintenance free compared to steel liners, increasing equipment availability.



Duratrax Conversions

PROBLEM: Duratrax boxes taken out of service due to excessive maintenance costs. Cables reached a point where they could not be tensioned any further. Tension cables would break causing damage to the rubber liner and the cables would require a long period of time to replace. When a hole developed in a liner, the whole bed liner had to be replaced. Rubber liners with patched holes were not feasible. Cables would have to be regularly tensioned, replaced or repaired.

SOLUTION: Modifications were made to the truck box frame. The center of gravity was lowered, giving extra stability to the truck. A steel structural support plate was added to the existing framework. Modular steel-backed Rubber Liners were bolted to the floor. Liners were abrasion resistant and structurally sound.

Valley Rubber can rebuild Duratrax boxes and return them to serve as a maintenance-free system.

Before



After



5 Years... Zero Box Maintenance!

Valley Rubber installed 6" thick Rubber Liners in Komatsu 830 and 930 Haul Trucks with the intention of extending the useful life of the truck box to five years without performing maintenance or repairs, except the monthly routine inspections and the rotation of the central pieces of the lining every three years. After five years, the Rubber Liners are still in service. The first trucks lined have hauled as many as 10,898,400 tons – all with zero box maintenance.



Screening Solutions

We offer standard screening systems as well as custom-designed screens to fit all makes of screening equipment, giving you a cost-effective solution. We can customize your screens by adding diverter bars, skid bars, extra structural support and impact areas - available in both rubber and rubber/ceramic configurations. In fact, we can replace your current media on the existing frame, with no adjustments necessary.



Before

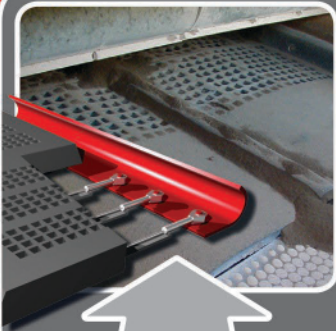


A major OEM's screens with severe blinding due to moisture content in the ore.

After



Our V-Slot screens with an anti-stick rubber formulation solved the blinding problem.



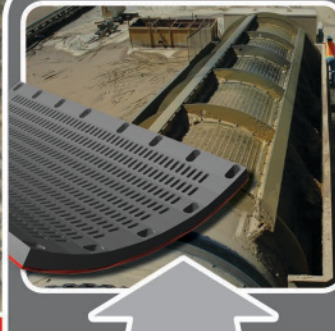
Side-Tensioned Screens & Flex Screens

For crown deck applications on any vibrating screen equipment, stainless steel aircraft cables are encapsulated in wear-resistant rubber and equally tensioned between the hooks. These screens have a lower cost-per-ton than wire & punched plate.



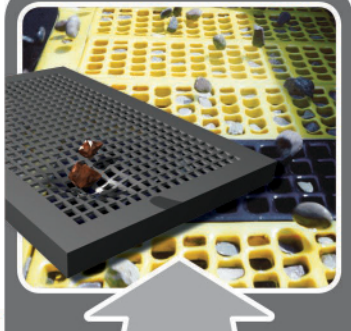
Steel-Backed Screens

These screens are designed to withstand extreme scalping applications. Stiffeners can be added for additional strength if the application warrants. As with other Valley Rubber solutions, these screens can be custom designed with hooks or bolt downs.



Trommel Screens

Along with lifter bars, dams, and liners, Trommel Screens are designed to control the desired output and are delivered to exacting specifications to minimize installation time and maximize your cost-per-ton targets.



Modular Screens

Our 1'X1' through 1'X4' panels replace modular screen styles with an open area that is equal to or greater than the competition.

Note the increased wear and plugging in the polyurethane screen (yellow); the black Valley Rubber modular screen was installed at the same time.

Applications

- Chute Liner
- Bin Liners
- Feed Box Liners
- Screen Side Liners
- Discharge Lip Liners
- Eccentric Tube Covers
- Cross Tube Covers
- Stationary Mixer Liners
- Skirt Board Liners
- Pan Feeder Liners
- Conveyor Transfer Liners
- Haul Truck Bed Liners
- Inflatable Liners
- Profile Liners
- Rubber/Ceramic Impact Liners
- Crusher Liners
- Impact Liners
- Classifier Wear Shoes
- Sheet Rubber

Liner Solutions

Customization – Valley Rubber manufactures highly customized rubber wear liners to fit your lining application. Our liners can be delivered to fit various shapes, sizes, thicknesses, and curvatures. In addition, we offer a wide variety of mounting solutions from plug welded to bolt in or track mounted. Our metal backing can be mild steel, stainless steel, aluminum, or anything appropriate to the application.



Magnetic - Ore Bed Liners - These liners are easy to install using powerful magnets that are molded within the wear-resistant rubber. The slotted back allows the liner to fit the wall contour. They come standard in 6.25" X 10".

Magnetic Patch Liners - If a hole develops in a chute, simply place the Magnetic Patch Liner over the hole on the outside of the chute wall. This will keep the plant running safely and production going until a scheduled maintenance day.

Standard Sizes - Easy to install 1-foot square liners with counterbored mounting holes or studs. Liners can be cut with a band saw for a custom fit.

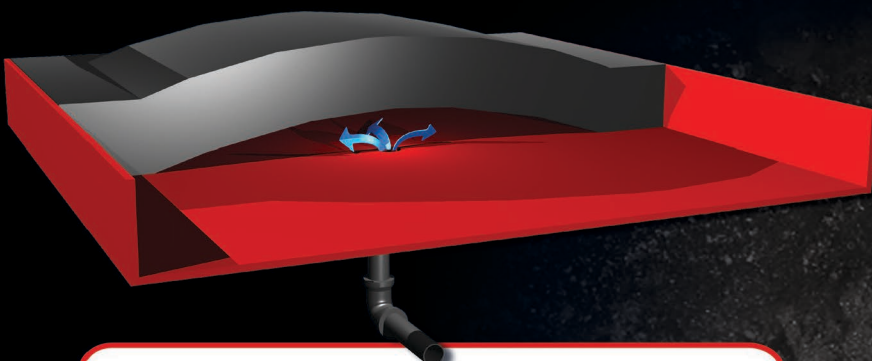
Cone Crusher Liners - Offer considerable reduction in noise and are generally lighter in weight and offer significantly longer life than their steel counterparts and have proven to be more cost effective than steel in the same application.

Crusher Feed Tubes, Distributor Feed Plates, Cone & Hopper Liners, Mainframe Liners

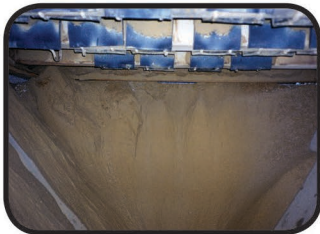


Inflatable Liner Systems

Cost effective when installed in areas in which there is severe buildup as a result of high moisture content in the material. These systems consist of custom-fit rubber liners that inflate and deflate with low-pressure air supplied through a user friendly Valley Rubber Control Box and low-pressure plant air. The timed action keeps the liners clean and the chute free from buildup. These systems provide extensive periods of maintenance-free service in areas which were previously high maintenance.



Before

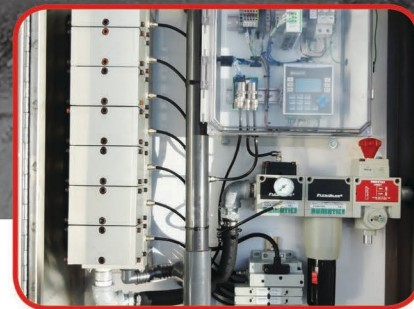


Chute backs up as material sticks

After



Inflatable liners keep the chute clear and functional



Air Control Panel

Rubber-Ceramic Liners – These liners are suitable for applications in areas of severe impact and areas of high abrasion. Liners can be supplied to incorporate a variety of ceramic shapes, including balls, cylinders and cubes, all of which have a high alumina silica content that withstands severe impact and high abrasion.

Before

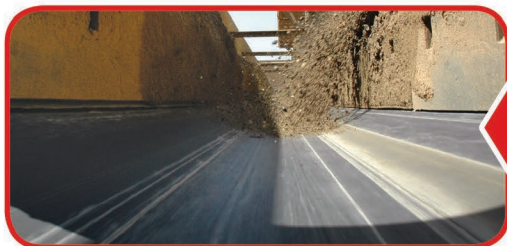


Steel liners last only 45 days in a Latin American operation.

After



Rubber-Ceramic Liners are currently still in operation after 15 months!



Heavy Duty Skirt Liners – These liners, also known as canoe liners, are highly effective particularly where material is being bulk loaded onto the conveyor to control the material until it becomes stable. The liners are steel backed and made to fit existing loading stations; they are manufactured to conform to the belt with the ability to adjust the height to fit the belt and maximize the liner life. The rubber thickness varies and ceramics can be added to fit the application.

Cutting, Fabrication & Machining

Why Valley Rubber Fabrication?

Valley Rubber can provide custom solutions for your toughest issues. Direct access to our engineering team and internal fabrication will result in quicker lead times. Structures can ship with our lining packages pre-installed to save installation time in the field.

State-of-the-Art Equipment

- Marvel Series 8-Mark III Band Saw
- Trumpf TruLaser 3040-Table Size 80" X 160"
- Bendmak 5/8" X 10' Plate Rolls
- Hydracrop 80/150, Geka Universal Ironworker-S Series
- Accurpress 14' Bed X 500 tons Press Brake



We purchase and stock a wide range of steel in bulk and can service your needs quickly. Material can be sourced rapidly if the size required is not carried in-house.



Machining Capabilities & Services

Our capabilities and services include CNC Turning and CNC Milling.

We provide steel cutting, welding, fabrication, forming, protective painting and more.





At the core, our Engineered Solutions solve problems for the Material Processing Industry. At Valley Rubber, we believe in a collaborative effort with a spirit of cooperation. When these two come together, we can work with you to accomplish amazing things. No two solutions are the same just as no two sites are the same. Our engineered solutions are custom designed for you. Simply put – there are too many variables in each application to merely white out one company's name on a title block and replace it with yours. Working together we will offer a Credible Custom Solution.



Screening Media & Accessories

- Side-Tension Molded Screens
- Steel-Backed Screens
- Modular Screens
- Crown Bar Rubber
- Center Hold Down Bars
- Shaker Balls

Wear Lining

- Steel-Backed Rubber Liners
- Rubber-Ceramic Liners
- Solid Rubber Liners
- Inflatable Liners
- Haul Truck Liners
- Cone Crusher Liners
- Distributor Feed Plates
- Resistex Liners
- Rubber Profile Liners
- Magnetic Profile Liners
- Magnetic Patch Liners
- Modular Liners
- Impact Bars

Conveying Solutions

- Conveyor Impact Bars
- Heavy Duty Skirt Liners
- DoubleLip DustSeal
- TripleLip DustSeal
- Skirtboard Rubber



Toll Free 1.256.784.5231

Fax 256.784.5232

3899 Highway 31 North
Falkville, AL 35622

See us online at
www.ValleyRubber.solutions