

Inflatable Rubber Liners



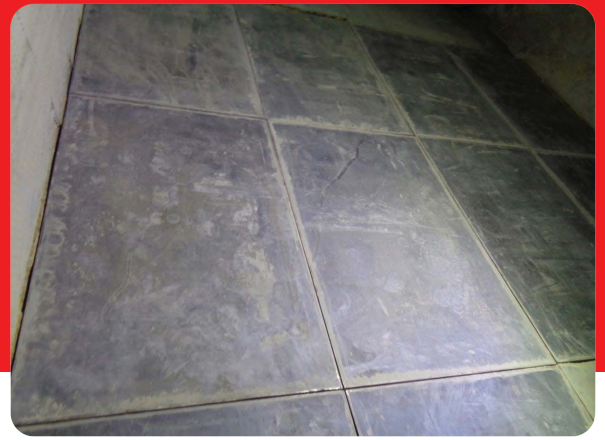
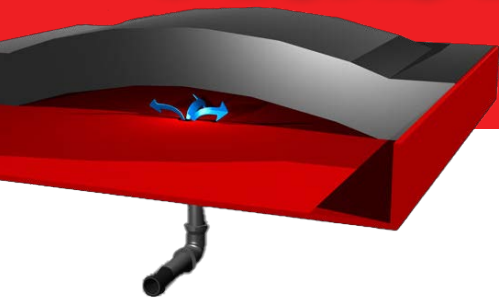
GRT
RUBBER



Valley
RUBBER

GRTrubber.com | valleyrubber.solutions

Inflatable Rubber Liners



Customization is **Key!**

Valley Rubber manufactures highly customized rubber liners to fit your applications.

Our liners can be delivered to fit various shapes, sizes, and thicknesses.

The rubber and metal components can be configured to suit the application requirements.

Our rubber compounds play a major role in the cost effective performance of our liners.

Control cabinets can be further customized with other features: additional air outlets, lighting, heating, outside controls, operating indicators, remote controls, and more!

Plugged Chutes?

Sticky material is no longer a problem with our gorilla-tough Inflatable Liners.

- Virtually eliminates chute maintenance in troublesome areas
- Custom manufactured to fit required space
- Lab tested rubber compound gives long life and protection against impact, cut, tear, and abrasion
- Dramatically reduces buildup of sticky material
- Rubber compound includes a nonstick release agent
- Liners inflate with minimal plant air



These systems are **cost-effective** when deployed in areas prone to severe buildup due to high moisture content in the material. They involve rubber liners that are inflated using plant air, regulated through a control box to maintain low pressure before passing through the liner system. Such an approach ensures prolonged, maintenance-free service periods, significantly boosting operational efficiency.

Valley Rubber produces two different Inflatable Liner control boxes:

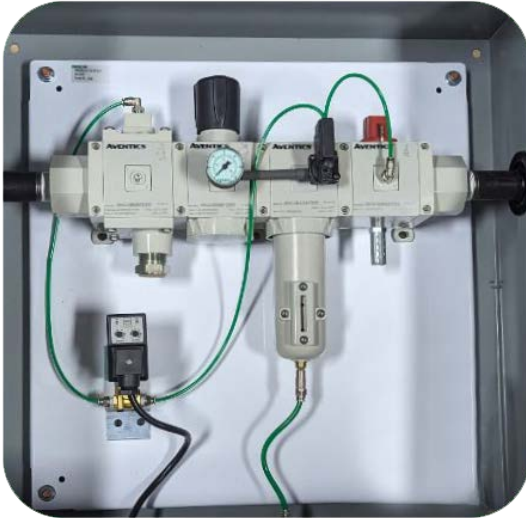
- 1) M Class
- 2) MDX Class



M Class

Inflatable Liner

Control Box



M Class Specifications

- One valve and two valve systems have adjustable electronic valve timers
- Control different PSI to each liner
- Change time of inflation and delay between cycles

Common Features

- Manual pressure regulation to each valve
- Liner delivery pressures are mechanically limited to 15 psi
- Drip Shield, Interior Light, and Enhanced Air Filtration are standard
- Valves are cartridge type for easy maintenance
- Heater is optional
- Faster deflation with externally installed quick exhaust valves (QE Valves)



The integration of our engineering team, support staff, and manufacturing capabilities with proven Engineered Solutions present you with a comprehensive partner for projects ensuring a seamless start-to-finish approach.

MDX Class

Inflatable Liner

Control Box



MDX Class Specifications

- Four, six, and eight valve units are PLC controlled
- PLC controlled inflation timing
- Inflate up to approximately 80 square feet per valve
- Sequentially inflate liners
- Pulsate liner inflation
- Unique parameters are set for each valve
- On/Off inputs (Example: If the conveyor stops, it will automatically shut off inflation system and then start back when conveyor begins running again)
- Touch screen HMI is included with PLC

Common Features

- Manual pressure regulation to each valve
- Liner delivery pressures are mechanically limited to 15 psi
- Drip Shield, Interior Light, and Enhanced Air Filtration are standard
- Valves are cartridge type for easy maintenance
- Heater is optional
- Faster deflation with externally installed quick exhaust valves (QE Valves)