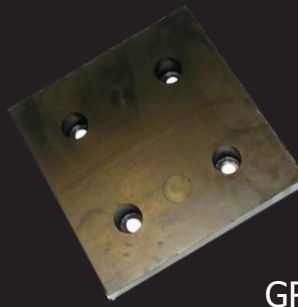


Modular Liners



GRTubber.com | ValleyRubber.Solutions



High wear areas can be easily replaced with Modular Liners.

Our Modular Liners contain a lab-tested rubber compound that gives long life and protection against impact, cutting, tearing, and abrasion. Easy to install, the liners have mounting options, plugs included, and can be cut with a band saw.

Rubber:

- Standard rubber
- 2,800 PSI tensile strength

Modular Liners:

- Two sizes:
 - 12" x 12"
 - 6" x 12"
- Two thicknesses:
 - 1 1/2" with 1/4" plate
 - 2" with 1/4" plate



Jaw Crusher Feed Chute, lined with 3" thick 12x12 Modular Rubber Liners, with one internal 1" NC mounting nut.

Additional Options:

- Number of mounting holes from 1-4 per liner
- Ceramics
- Steel backing thicknesses
- Quantity discounts
- Custom shapes and sizes

Mounting Options Magnetic options are also available

