

Cutting,
Fabrication
& Machining



ValleyRubber.**Solutions** | 1.256.784.5231

Why Valley Rubber Fabrication?

A lined chute
for a
Latin American
Operation.



With **50+ years of combined management experience**, Valley Rubber can provide custom solutions for your toughest issues. Direct access to our engineering team and internal fabrication will result in quicker lead times.



Laser Capacity

Cuts up to 1" mild steel
Max sheet size is 72" x 160"
Table size is 80" x 160"



We purchase and stock a **Wide Range Of Steel In Bulk** and can service our customer's needs quickly. Material can be rapidly sourced if a size required is not carried in-house.

Engineering Capabilities

Our engineering team and support staff is larger and more capable than ever, and you now have a direct association with the manufacturer of the components within the solution. Combining the solid manufacturing capabilities of Valley Rubber with our proven engineered solutions provides you with a start-to-finish partner for projects that include field reconnaissance, engineering and manufacturing.

- Experienced engineering staff
- Ability to Project-Manage
- CAD software includes: Autodesk Inventor, Autodesk Recap, Batch Publish Manager & Autodesk Auto CAD

**We provide steel cutting, welding,
fabrication, forming,
protective painting and more.**



**A chute in the process
of being fabricated.
The unlined structure
weighs approximately
6000 lbs. and is
144"x84"x74".**



State-of-the-Art Equipment

- Marvel Series 8- Mark III Band Saw
- Trumpf TruLaser 3040
- Bendmak 5/8" x 10' Plate Rolls
- Hydracrop 80/150, Geka Universal Ironworker-S series
- Accurpress 14' Bed x 500 tons Press Brake



Bendmak 5/8" x10' Plate Rolls

Plate Width	Desired Diameter	Mild Steel Pre-Bending 36,000 PSI Yield	Mild Steel Rolling 36,000 PSI Yield	Pre-Bending 54,000 PSI Yield	Rolling 54,000 PSI Yield
120"	14.29" (1.1x TR Ø)	.307"	.378"	.248"	.303"
120"	16.89" (1.3 x TR Ø)	.385"	.472"	.307"	.378"
120"	19.49" (1.5 x TR Ø)	.409"	.503"	.330"	.405"
120"	25.98" (2.0 x TR Ø)	.480"	.590"	.385"	.476"
120"	38.98" (3.0 x TR Ø)	.511"	.629"	.409"	.507"
120"	64.96" (5.0 x TR Ø)	.539"	.661"	.433"	.531"
120"	129.9" (10.0 x TR Ø)	.563"	.693"	.443"	.555"

**Accurpress
14' Bed x 500 tons
with CNC capabilities
which allow
precise repeatability.**

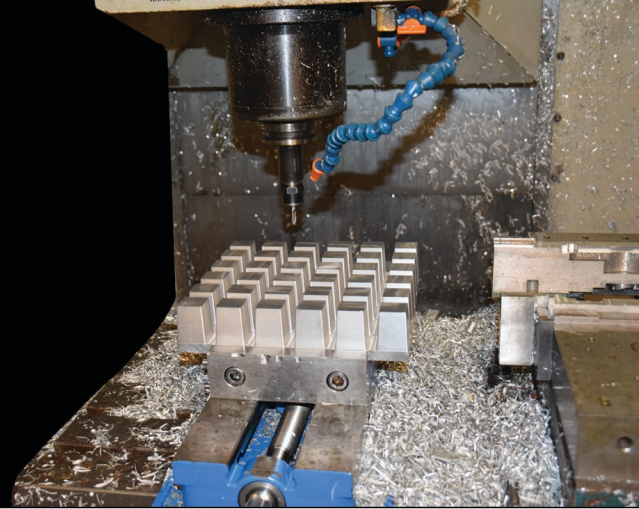
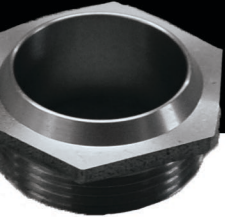
- **Certified staff ensures excellence**
- **10-ton crane lift capacity**
- **Rubber bonded steel option**



**Band Saw
Marvel Series
8 Mark III**

Rectangular Capacity	Standard Capacity	M6 High Column Capacity
Capacity Nominal	18" x 22"	18" x 28"
Tilt	0 to 60° Left and Right	*High column machines require a 16'4" blade.

Machining Capabilities



Our **experienced** and **dedicated** Cutting, Fabrication and Machining staff will work with you to provide custom solutions for your toughest projects.

Materials Machined Include:

All Stainless Series • All Nickel Series • Aluminum
Brass • Copper • Titanium • Tungsten • Molybdenum
Plastics • Teflon • Macor • Boron Nitride • Graphite
Beryllium Copper • Zirconium

Capabilities & Services

- CNC Turning
- CNC Milling
- Precision Deburring
- Honing & Lapping
- Grinding
- Passivation
- Electropolishing

Quality Machining Services Include:

- ISO 9001:2015 Compliant
- Comprehensive Quality Manual
- Complete Process Documentation
- First Article, In Process, and Final Inspection Reports Available
- Conformance of Materials
- Scheduled Tool and Gauge Calibration



Visit us online for additional information:
ValleyRubber.Solutions