

## Classifier Shoe Application Information

End User: \_\_\_\_\_ Date: \_\_\_\_\_

Location: \_\_\_\_\_ Dealer: \_\_\_\_\_

Dealer Contact: \_\_\_\_\_

### Equipment

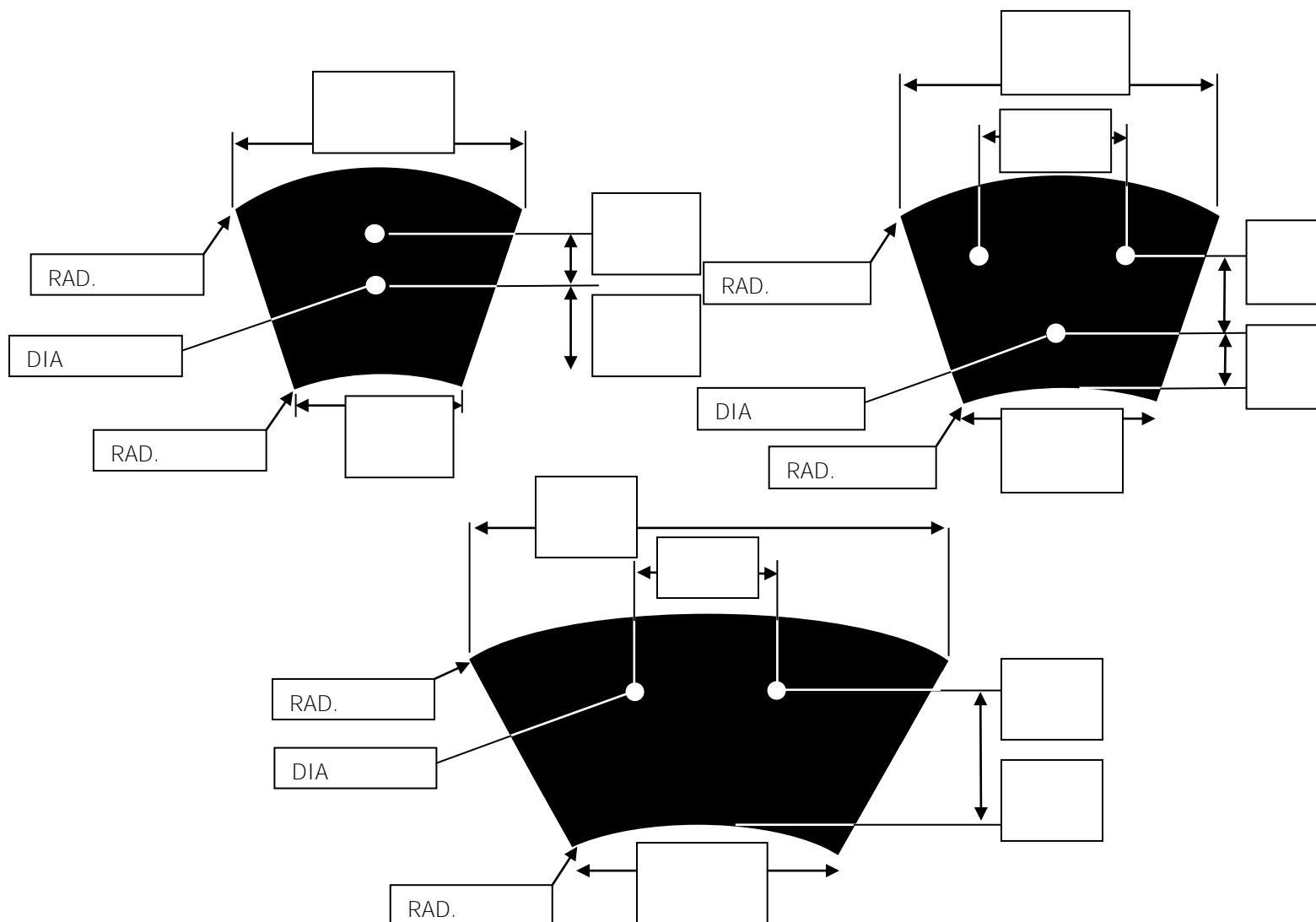
Manufacturer, Classifier Size & Mfg. Part Number: \_\_\_\_\_

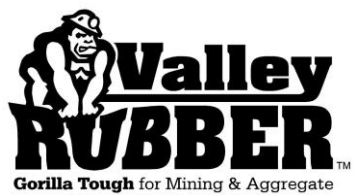
### Material

Is it course?    Yes    No    If yes – what is the size of the material?

\_\_\_\_\_  
\_\_\_\_\_

**Complete the dimensions in the boxes.**





## Cone & Hopper Application Information

End User: \_\_\_\_\_ Date: \_\_\_\_\_

Location: \_\_\_\_\_ Dealer: \_\_\_\_\_

Dealer Contact: \_\_\_\_\_

Equipment

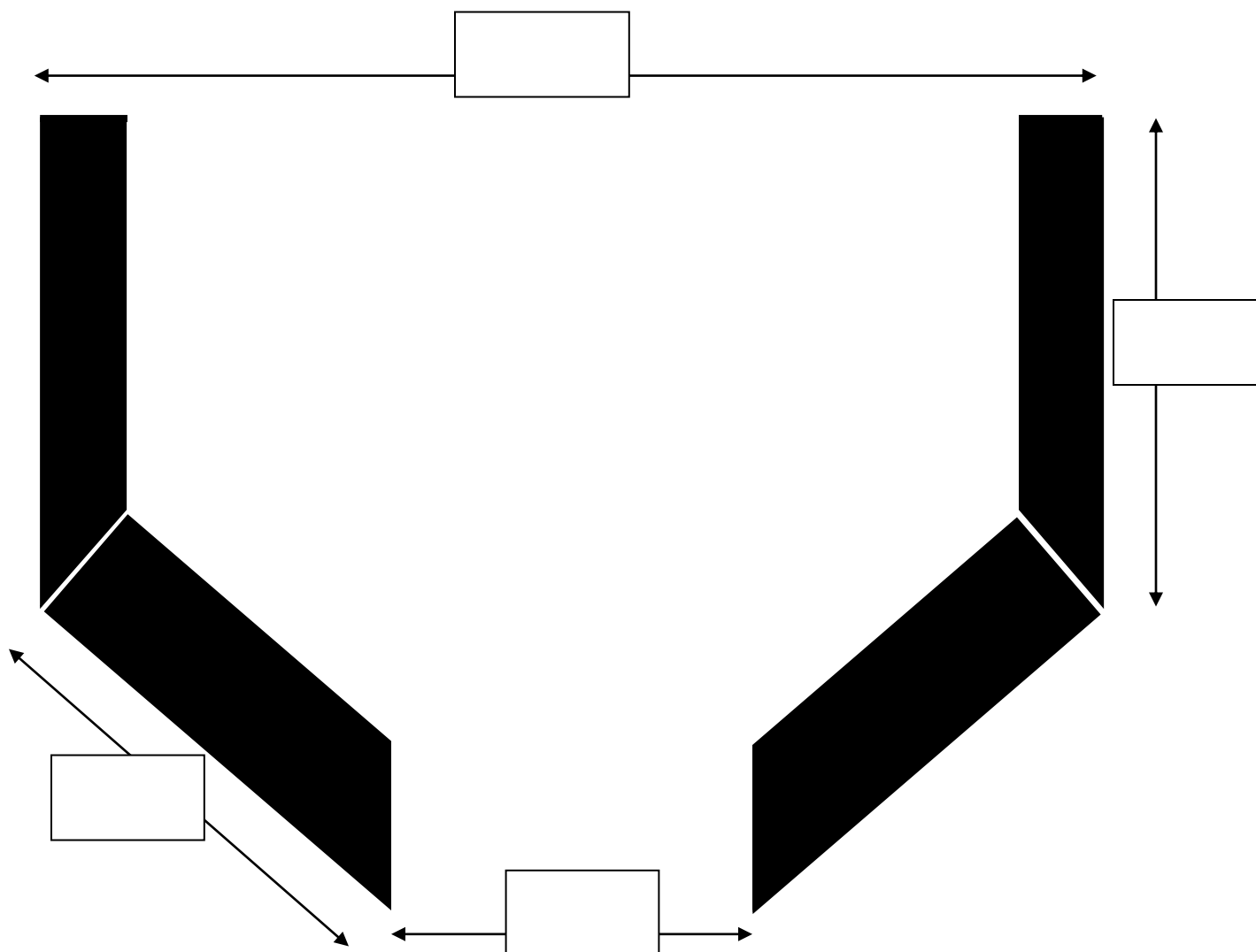
Crusher Make: \_\_\_\_\_ Size: \_\_\_\_\_

**Standard** **Short Head Crusher**

Choke Feed - Yes No

Notes

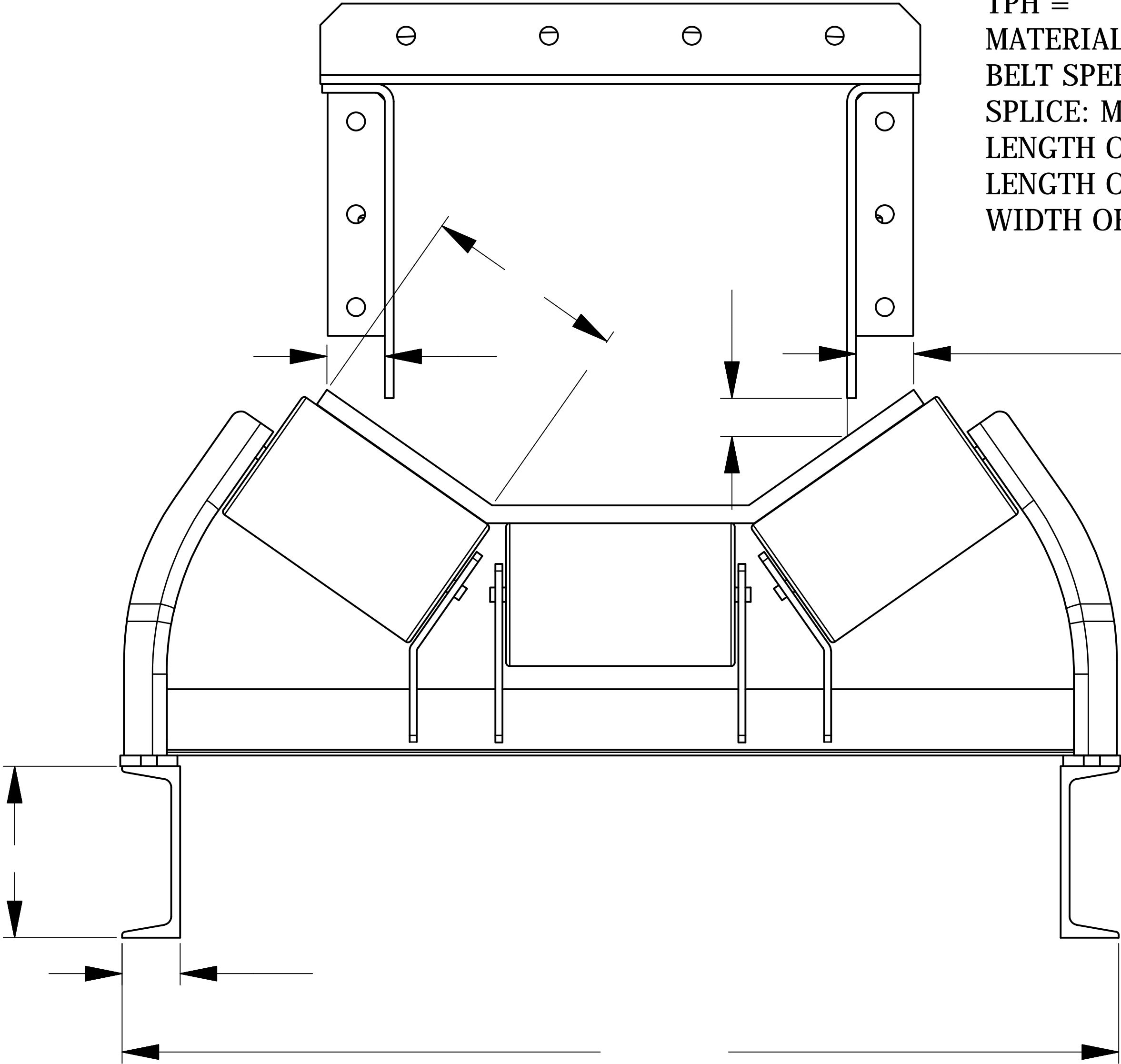
**Complete the dimensions in the boxes.**



NOTES: UNLESS OTHERWISE SPECIFIED

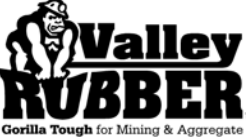
100. ALL DIMENSIONS ARE INCHES AND VALUES ARE IN U.S. CUSTOMARY UNITS.

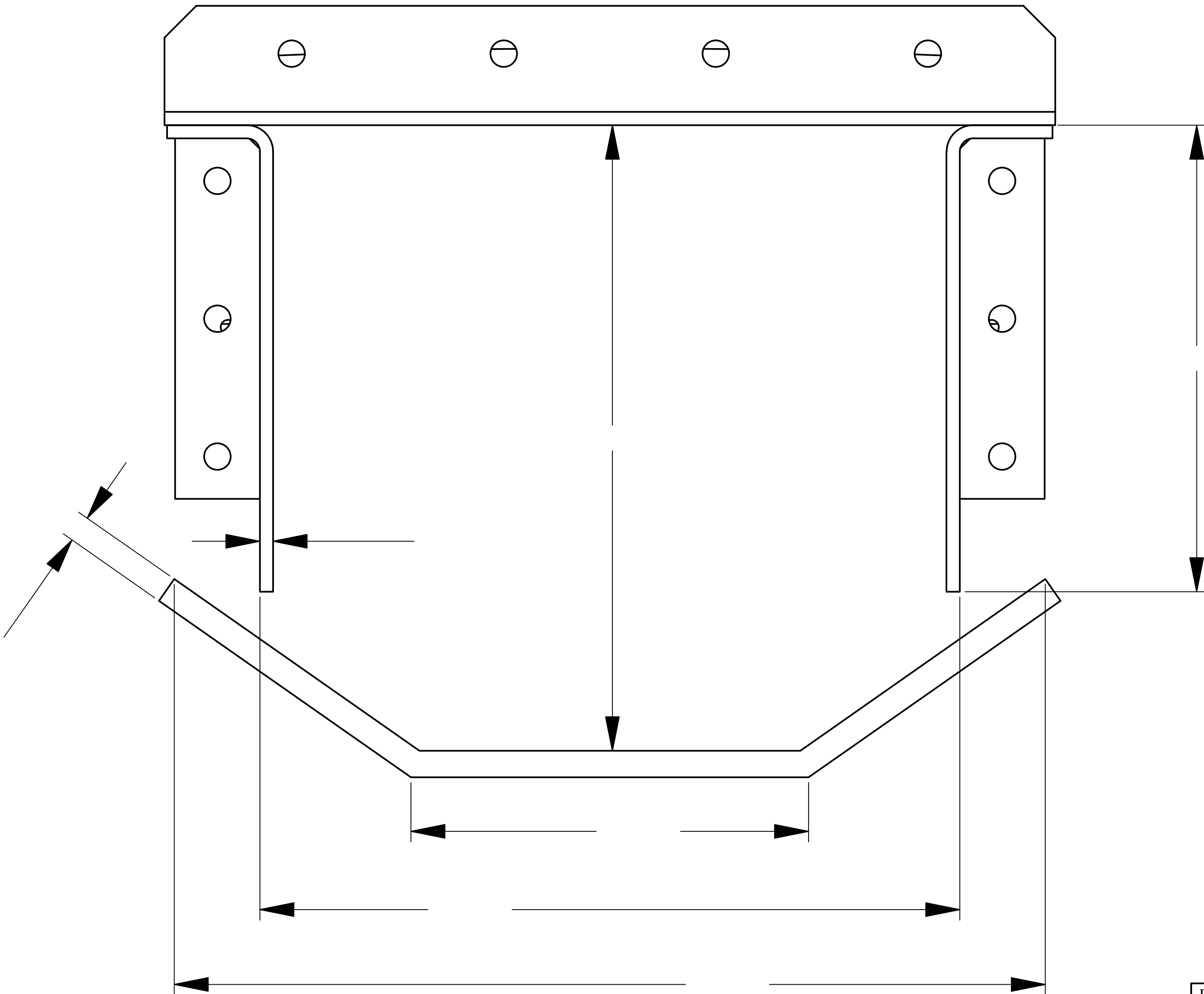
TPH =  
MATERIAL & SIZE =  
BELT SPEED,FPM =  
SPLICE: MECH OR VULC =  
LENGTH OF CANOE =  
LENGTH OF LOAD SHOE =  
WIDTH OF LOAD SHOE =



Conveyor Tail & Dust Seal Kit

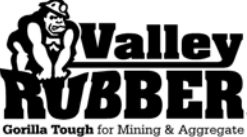
DRAWN BY	
DRAWN DATE	
IDLER MFG	
IDLER P.N.	
File NO	RLES1201_02857_FN.idw

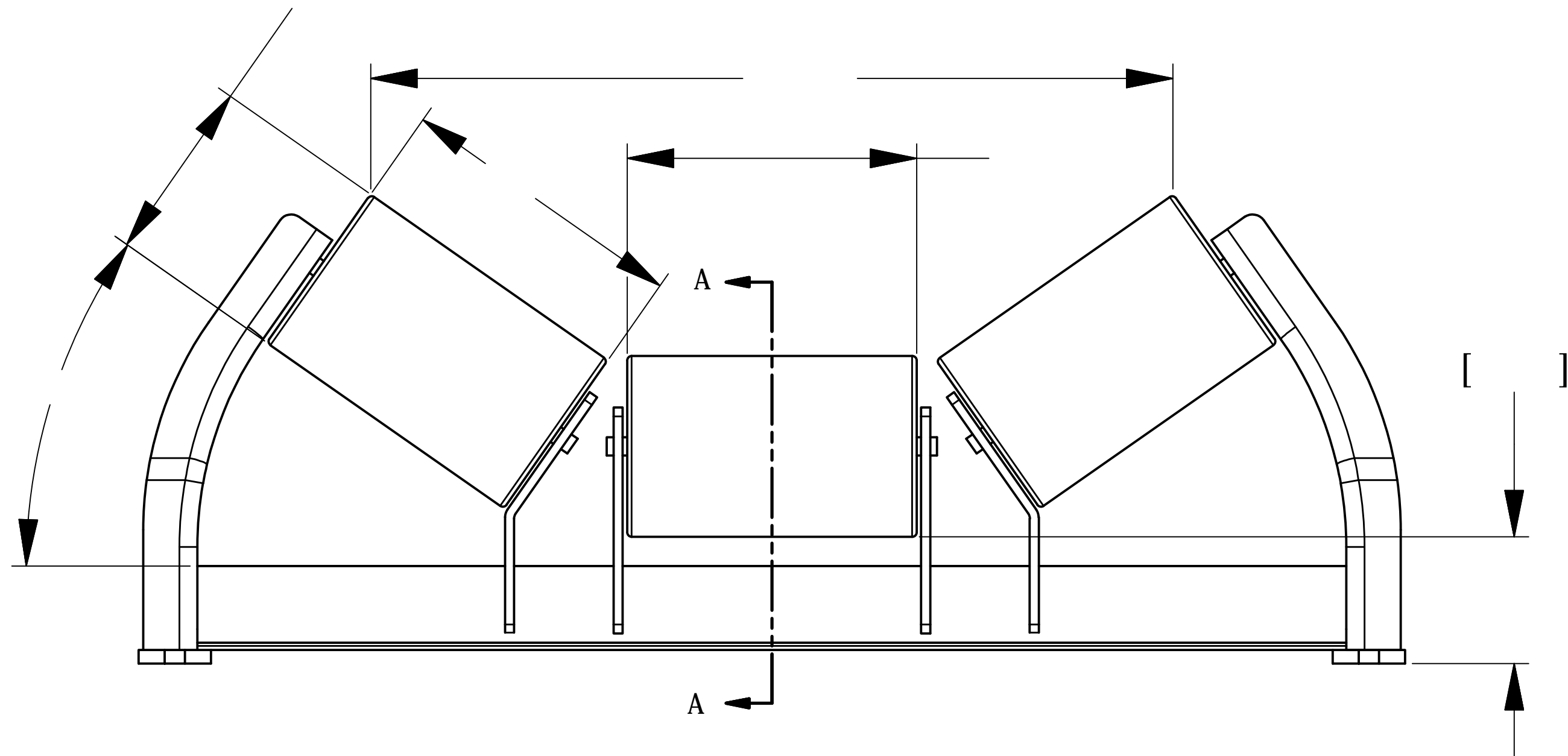
PROJECT & DESCRIPTION	
CUSTOMER & LOCATION	
	3899 Highway 31 North Falkville, AL 35622 PHONE (256)784-5231 SHEET 1 OF 3



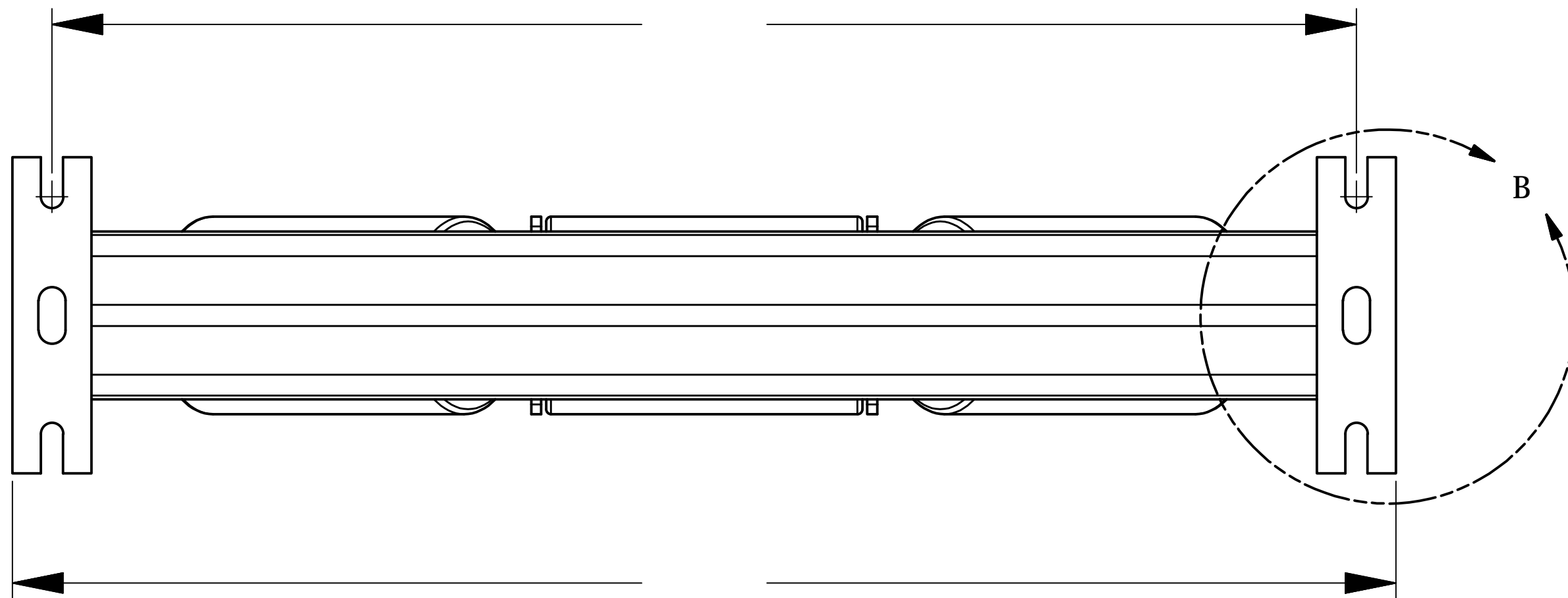
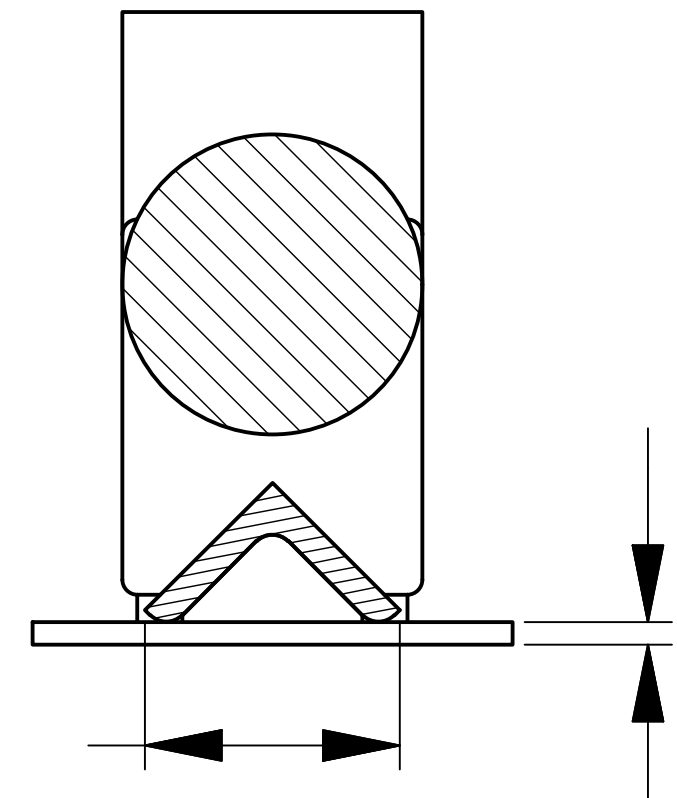
# Conveyor Tail & Dust Seal Kit

DRAWN BY	
DRAWN DATE	
IDLER MFG	
IDLER P.N.	
File NO	RLES1201_02857_FN.idw

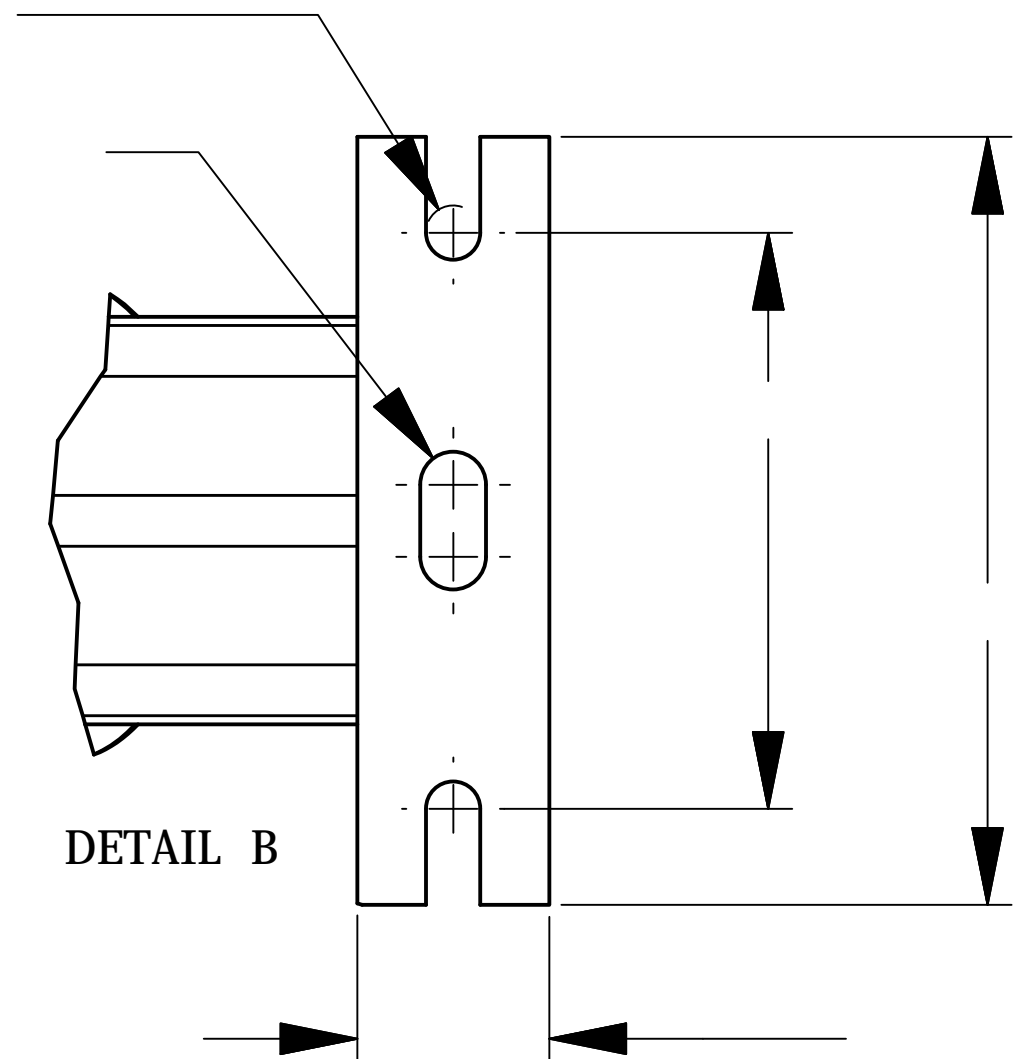
PROJECT & DESCRIPTION	
CUSTOMER & LOCATION	
	3899 Highway 31 North Falkville, AL 35622 PHONE (256)784-5231 SHEET 2 OF 3



SECTION A-A




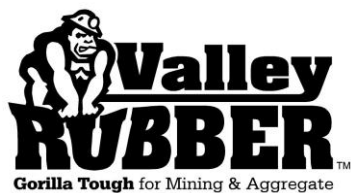
DETAIL B



# Conveyor Tail & Dust Seal Kit

DRAWN BY	
DRAWN DATE	
IDLER MFG	
IDLER P.N.	
File NO	RLES1201_02857_FN.idw

PROJECT & DESCRIPTION	
CUSTOMER & LOCATION	
	3899 Highway 31 North Falkville, AL 35622 PHONE (256)784-5231 SHEET 3 OF 3



## Crusher Feed Plate Application Information

End User: \_\_\_\_\_ Date: \_\_\_\_\_

Location: \_\_\_\_\_ Dealer: \_\_\_\_\_

Dealer Contact: \_\_\_\_\_

### Equipment

Crusher Make: \_\_\_\_\_ Size: \_\_\_\_\_

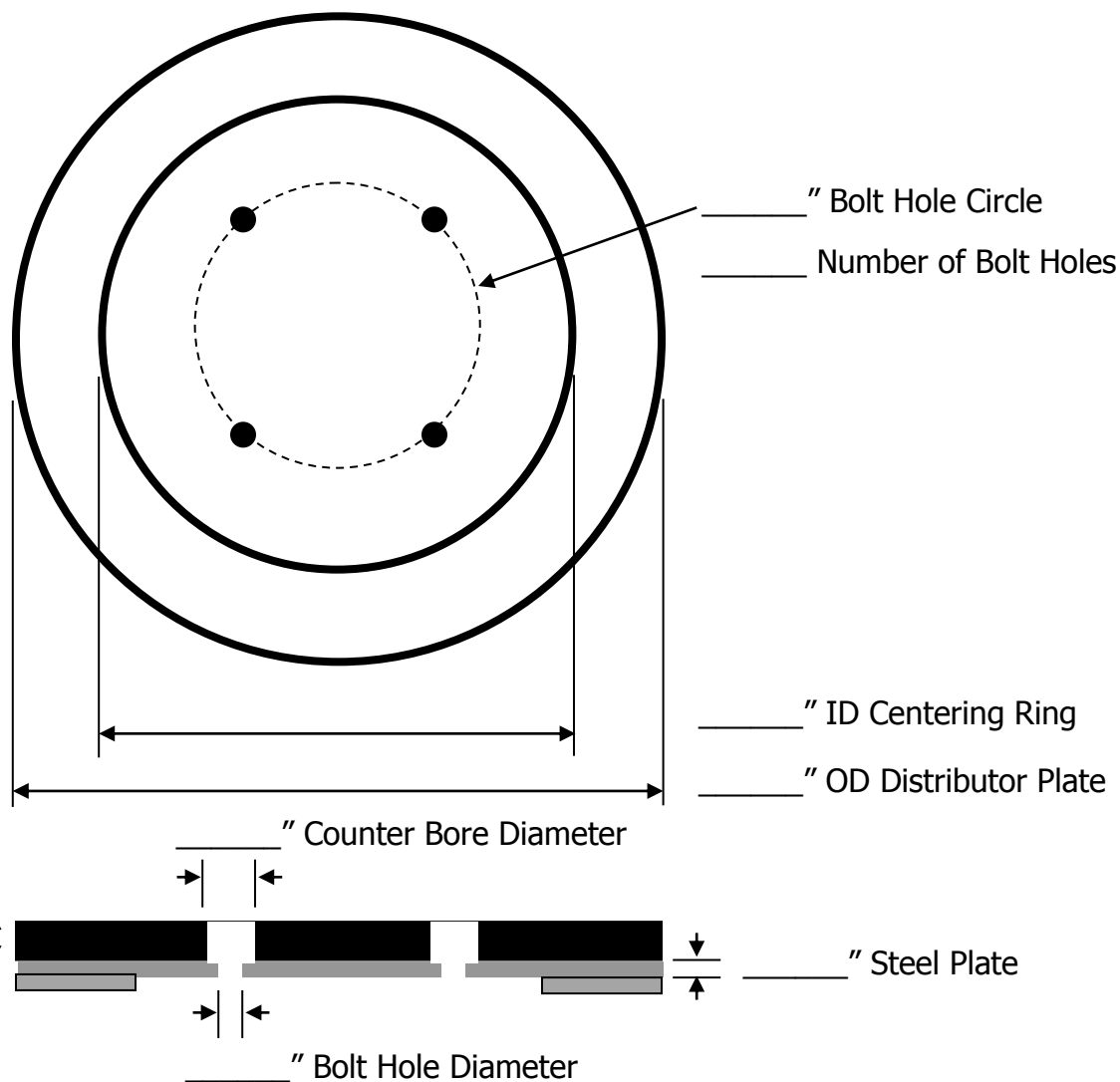
Standard Short Head Crusher

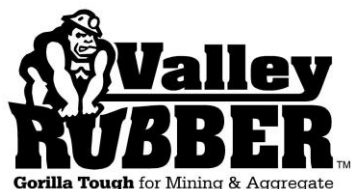
Choke Feed - Yes No

### Notes

Is dead bed required? \_\_\_\_\_

**Complete the dimensions in the blanks.**





## Rubber, Inflatable & Ceramic Liner Application Information

End User: \_\_\_\_\_ Date: \_\_\_\_\_

Location: \_\_\_\_\_ Dealer: \_\_\_\_\_

Dealer Contact: \_\_\_\_\_

### Equipment/Chute

Description of Application (feedbox, discharge lip, transfer point...):

---

---

Drawing of Chute or Liner arrangement required.

### Material

Tons per hour: \_\_\_\_\_ Drop height: \_\_\_\_\_

Angle of impact: \_\_\_\_\_ Type of material: \_\_\_\_\_

Maximum size of material: \_\_\_\_\_ % of fines: \_\_\_\_\_

% of Moisture content: \_\_\_\_\_ Is there material buildup? Yes No

### Existing Liners

What Liner material is currently used? : \_\_\_\_\_

What is the wear life? *in tons*: \_\_\_\_\_

What other problems exist with current lining system?: \_\_\_\_\_

---

---

Any additional information:

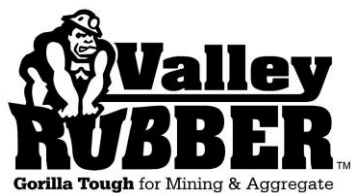
---

---

---

Please use the back of this form for any sketches

**Note direction of flow on all pieces**



# Main Frame Liner Application Information

End User: \_\_\_\_\_ Date: \_\_\_\_\_

Location: \_\_\_\_\_ Dealer: \_\_\_\_\_

Dealer Contact: \_\_\_\_\_

## Equipment

Crusher Make: \_\_\_\_\_ Size: \_\_\_\_\_

**Standard** **Short Head Crusher**

Close side setting: \_\_\_\_\_ Open side setting: \_\_\_\_\_

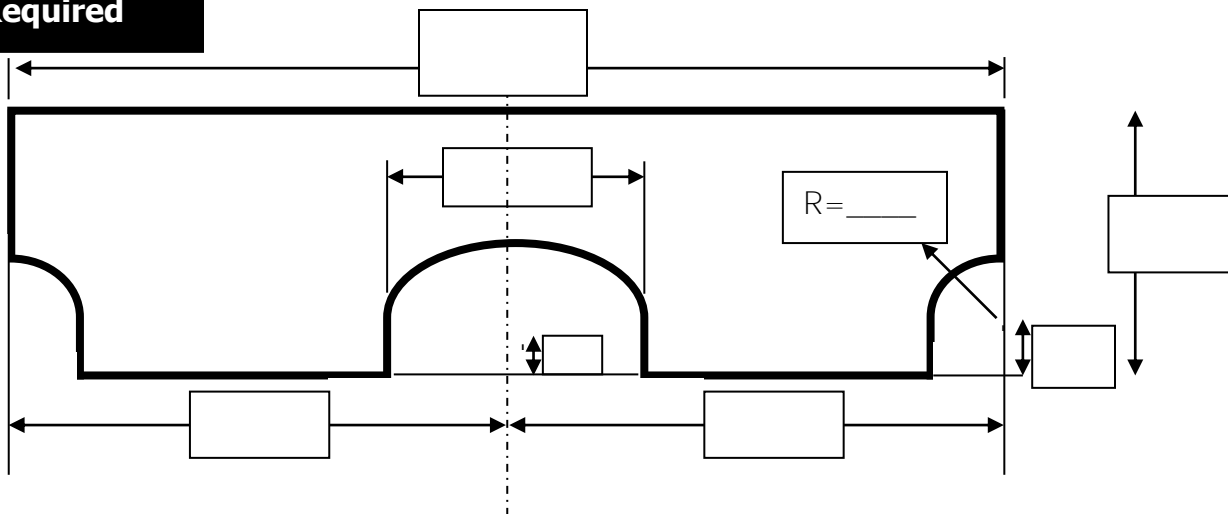
## Existing Liners

What liner material is currently used? : \_\_\_\_\_

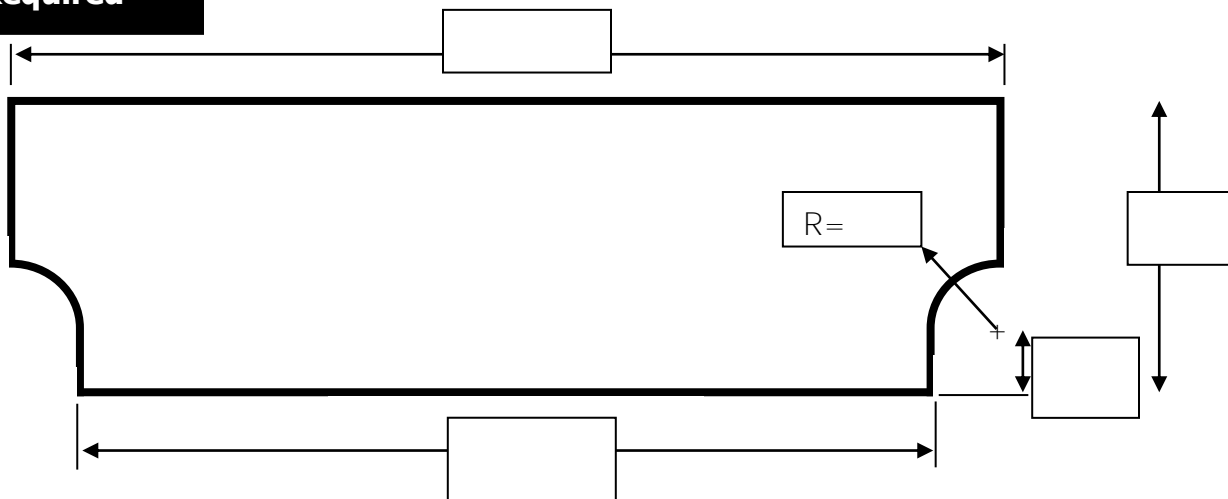
What is the wear life? *in tons*: \_\_\_\_\_ Main Frame ID?: \_\_\_\_\_

**Complete the dimensions in the boxes.**

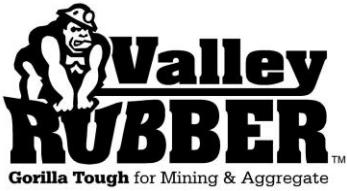
## Piece/s Required



## Piece/s Required







## Modular Rubber Screen Application Information

End User: \_\_\_\_\_ Date: \_\_\_\_\_

Location: \_\_\_\_\_ Dealer: \_\_\_\_\_

Dealer Contact: \_\_\_\_\_

### Equipment

Screening Equipment Manufacturer: \_\_\_\_\_ Incline or Horizontal: \_\_\_\_\_

Screen Surface Angle: \_\_\_\_\_ Deck Size: \_\_\_\_\_ X \_\_\_\_\_ Number of Decks \_\_\_\_\_

Type of Screens in Use: \_\_\_\_\_ *Rubber* \_\_\_\_\_ *Wire* \_\_\_\_\_ *Punch Plate* \_\_\_\_\_ *Urethane* \_\_\_\_\_

What is the wear life? *in tons*: \_\_\_\_\_

### Material

Tons per Hour to Deck: \_\_\_\_\_ Type of Material: \_\_\_\_\_

Size (Min. & Max.): \_\_\_\_\_ Shape of Material: \_\_\_\_\_

% of Moisture content: \_\_\_\_\_ % of fines: \_\_\_\_\_

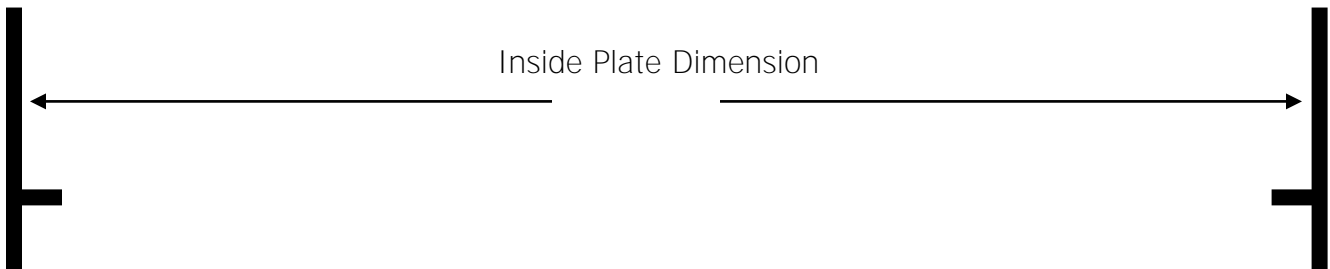
Is there pegging? Yes No Is there blinding? Yes No

Any additional information including pros and cons of existing system:

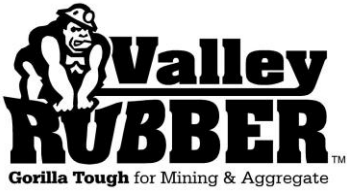
---

---

---



Further notations requested on page two for existing **Synthetic Media Only.**



# Modular Rubber Screen Application Information

## Current Screen Information

**A.** Build Height \_\_\_\_\_

**B.** Aperture Size \_\_\_\_\_  
 Round      Square      Slotted

**C.** Min. Web Width \_\_\_\_\_

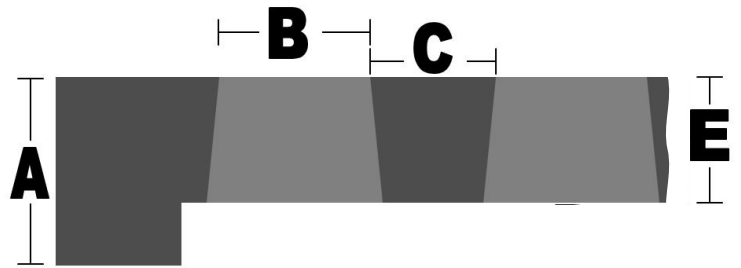
**D.** Total number of apertures down \_\_\_\_\_ across \_\_\_\_\_

**E.** Web Depth \_\_\_\_\_

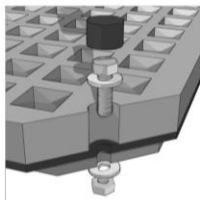
**F.** Panel Size \_\_\_\_\_  
*Length X Width*

**G.** Style \_\_\_\_\_  
*Choose Below*

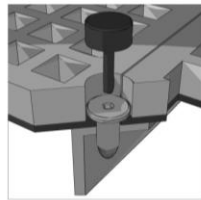
**H.** Features \_\_\_\_\_  
*Dams, Diverters, Skid Bars*



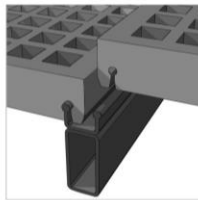
## Current Screen Style



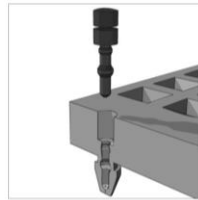
**Bolt Down**



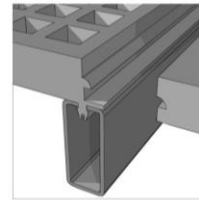
**Pin & Sleeve**



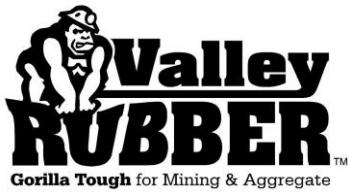
**Snap On**



**Pin & Leg**



**Interlocking**



## Side Tensioned Screen Application Information

End User: \_\_\_\_\_ Date: \_\_\_\_\_

Location: \_\_\_\_\_ Dealer: \_\_\_\_\_

Dealer Contact: \_\_\_\_\_

### Equipment

Screening Equipment Manufacturer: \_\_\_\_\_ Incline or Horizontal: \_\_\_\_\_

Screen Surface Angle: \_\_\_\_\_ Deck Size: \_\_\_\_\_ X \_\_\_\_\_ Number of Decks: \_\_\_\_\_

Inside Plate Dimension: \_\_\_\_\_

Type of Screens in Use: *Rubber* *Wire* *Punch Plate* *Urethane*

Current Media Thickness: \_\_\_\_\_ What is the wear life? *in tons*: \_\_\_\_\_

### Material

Tons per Hour to Deck: \_\_\_\_\_ Type of Material: \_\_\_\_\_

Size (Min. & Max.): \_\_\_\_\_ Shape of Material: \_\_\_\_\_

% of Moisture content: \_\_\_\_\_ % of fines: \_\_\_\_\_

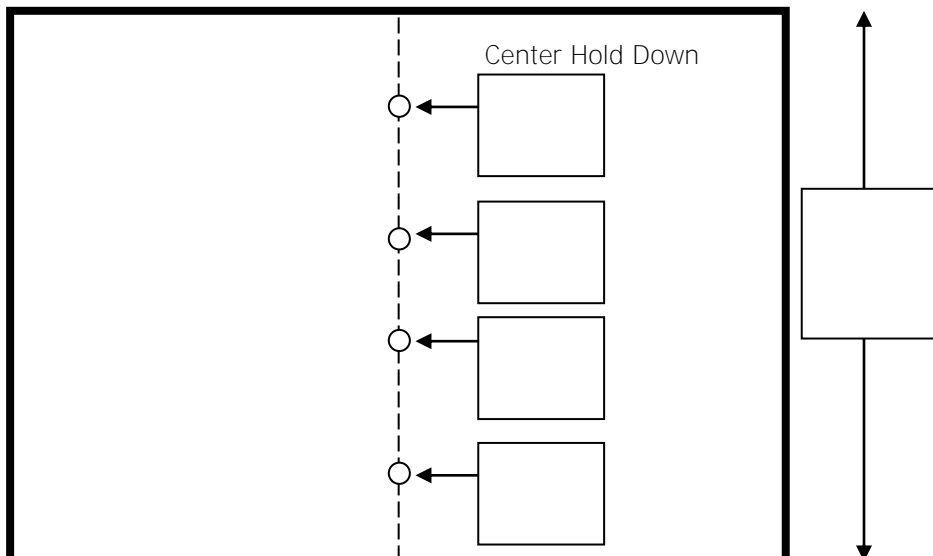
Is there pegging? ☐ Yes ☐ No Is there blinding? ☐ Yes ☐ No

Any additional information: \_\_\_\_\_

### Screen Information

Required Aperture Size: \_\_\_\_\_ *Round* *Square* *Slotted*

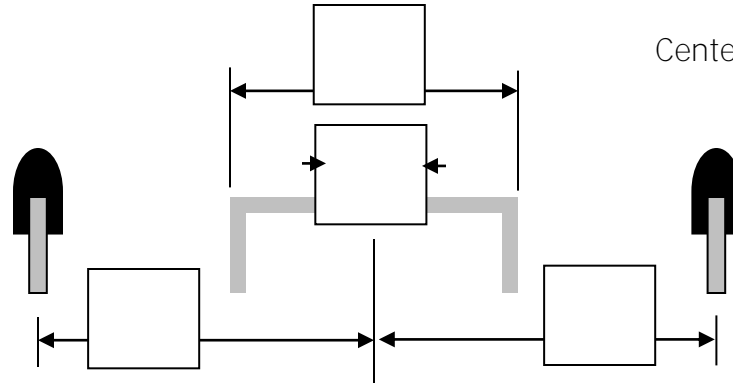
Note any special instructions on this view. (Example: Impact Areas)



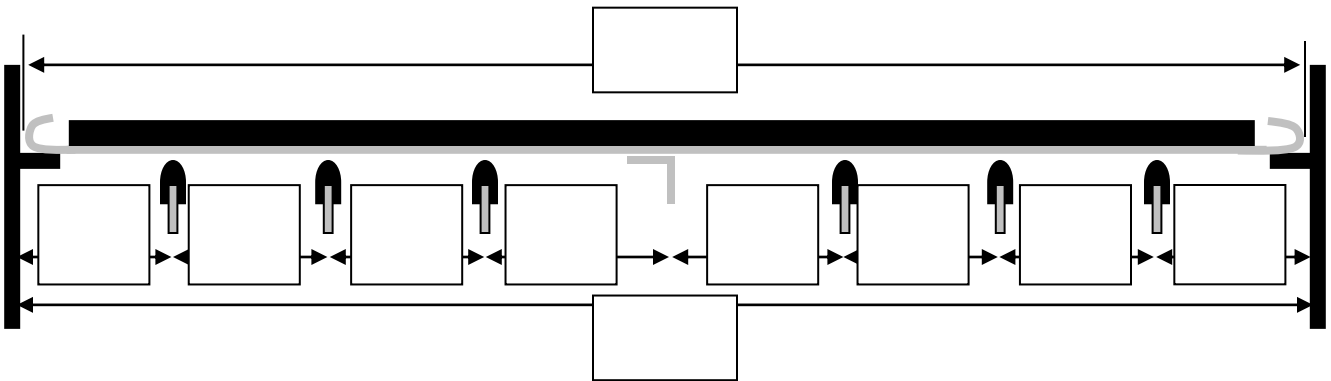
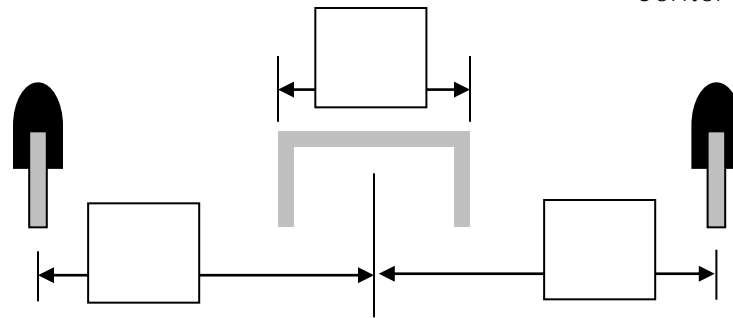
Further notations requested on the next page.

## Side Tensioned Screen Application Information

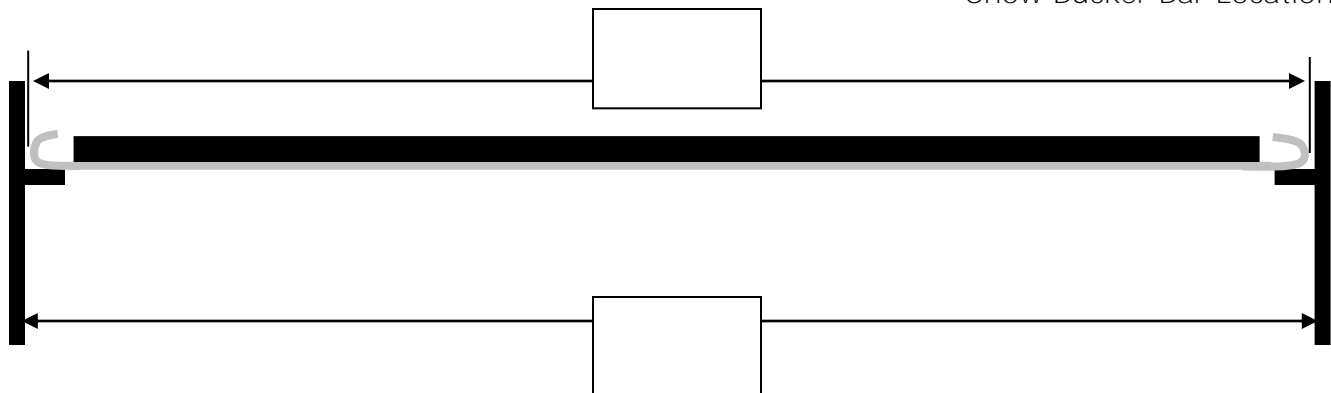
Center Hook Configuration

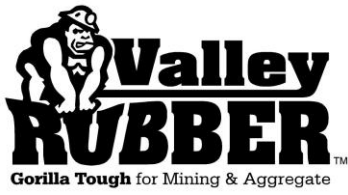


Center Channel Configuration



Show Bucker Bar Locations





## Stationary Mixer Liner Application Information

End User: \_\_\_\_\_ Date: \_\_\_\_\_

Location: \_\_\_\_\_ Dealer: \_\_\_\_\_

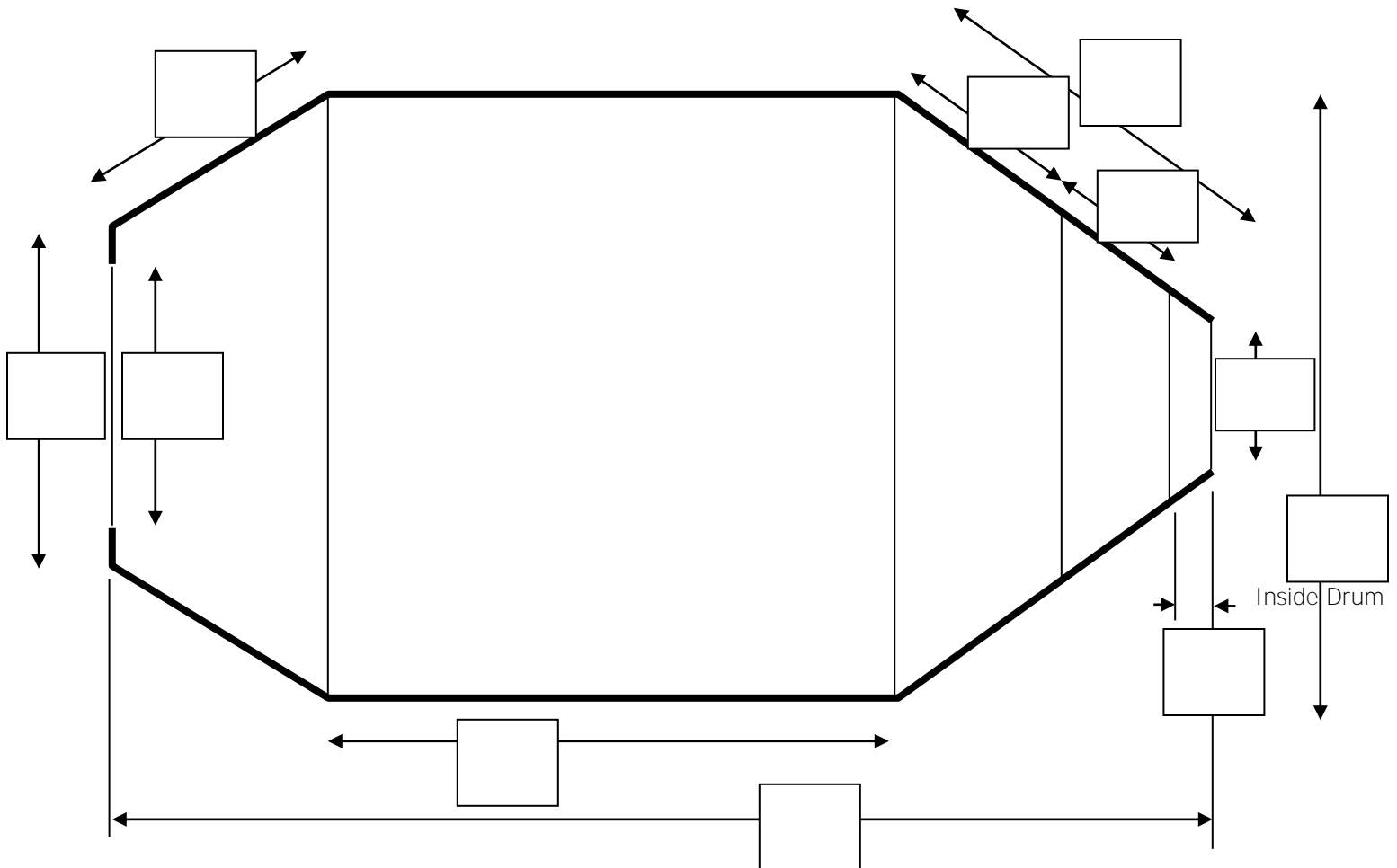
Dealer Contact: \_\_\_\_\_

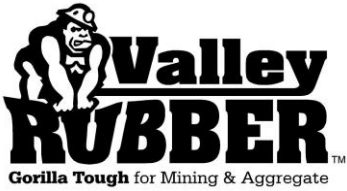
Equipment

Make & Size: \_\_\_\_\_

Notes

**Complete the dimensions in the blanks.**





## Steel Backed Screen Application Information

End User: \_\_\_\_\_ Date: \_\_\_\_\_

Location: \_\_\_\_\_ Dealer: \_\_\_\_\_

Dealer Contact: \_\_\_\_\_

### Equipment

Screening Equipment Manufacturer: \_\_\_\_\_ Incline or Horizontal: \_\_\_\_\_

Screen Surface Angle: \_\_\_\_\_ Deck Size: \_\_\_\_\_ X \_\_\_\_\_ Number of Decks: \_\_\_\_\_

Inside Plate Dimension: \_\_\_\_\_

Type of Screens in Use: *Rubber Wire Punch Plate Urethane*

Current Media Thickness: \_\_\_\_\_ What is the wear life? *in tons*: \_\_\_\_\_

### Material

Tons per Hour to Deck: \_\_\_\_\_ Type of Material: \_\_\_\_\_

Size (Min. & Max.): \_\_\_\_\_ Shape of Material: \_\_\_\_\_

% of Moisture content: \_\_\_\_\_ % of fines: \_\_\_\_\_

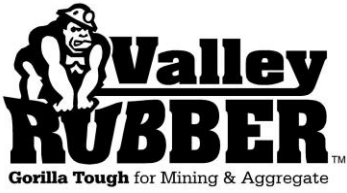
Is there pegging? Yes No Is there blinding? Yes No

Any additional information:

### Screen Information

Required Aperture Size: \_\_\_\_\_ Round Square Slotted

Further notations requested on the next page.



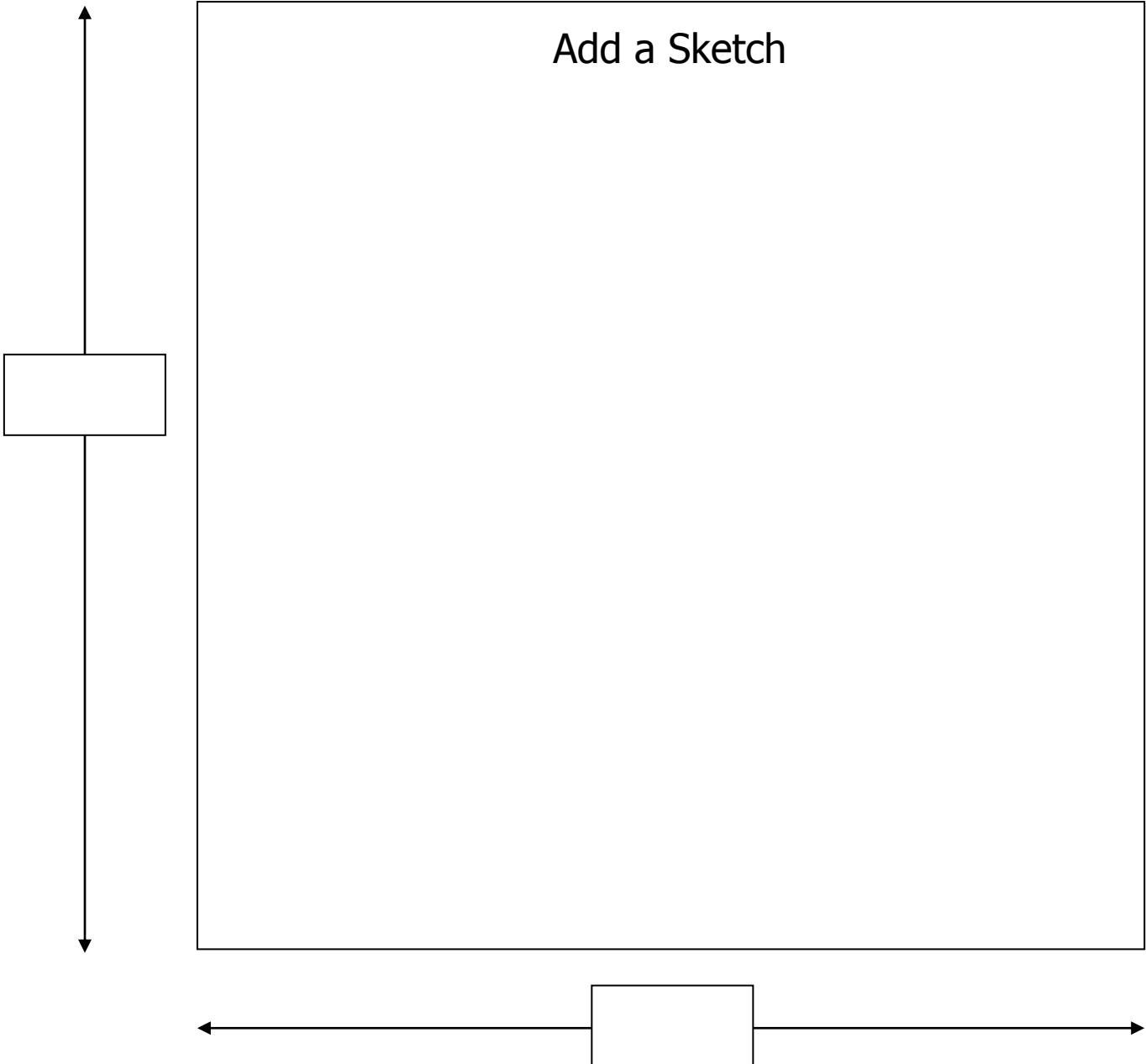
## Steel Backed Screen Application Information

### Area below represents one screen panel

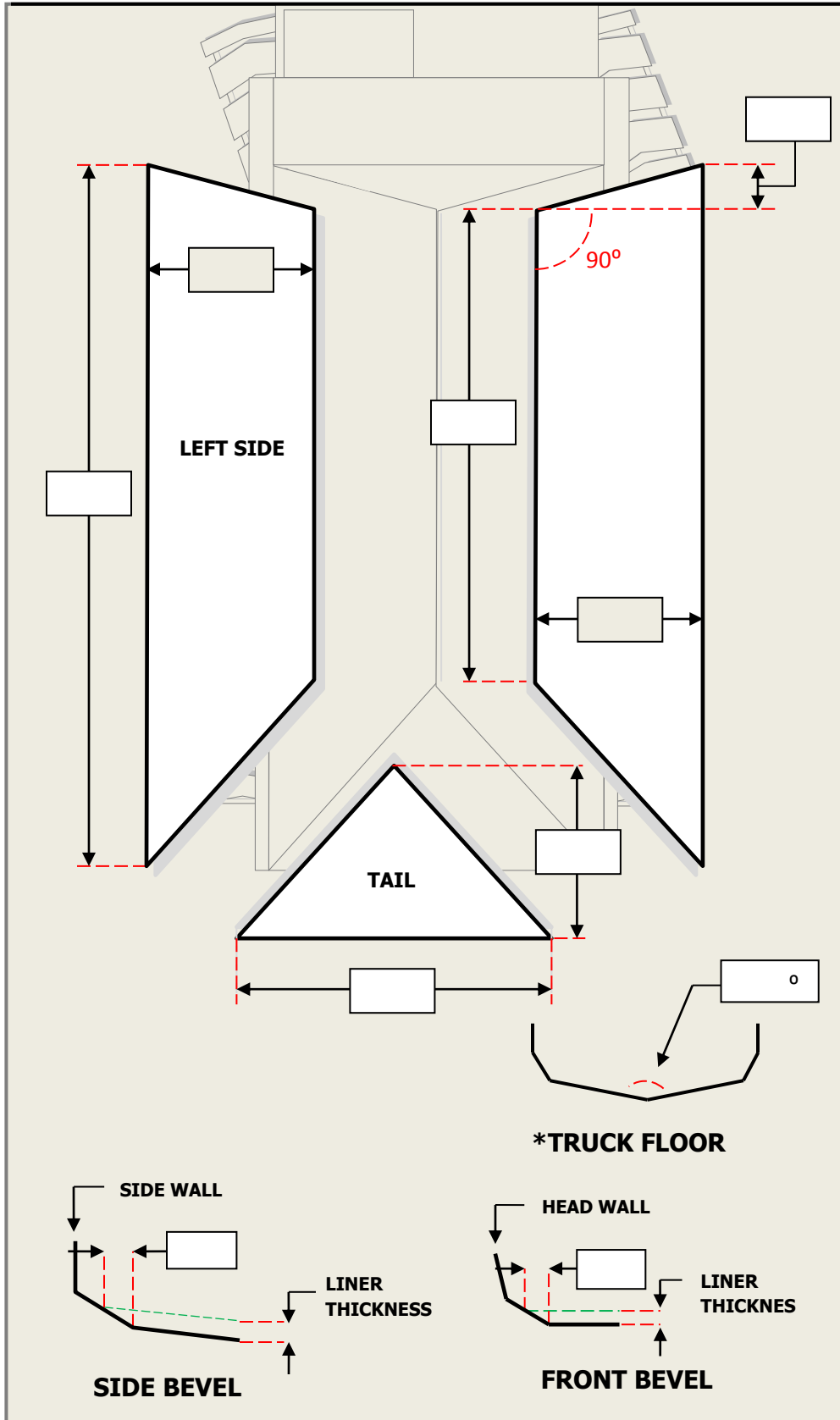
Sketch the following:

1. Length & width of screen panel
  2. Mounting hole pattern – including hole size
  3. Deck frame structure
  4. Are the screen panels symmetrical or mirror image?
- 
5. Indicate additional features – impact area (rubber/ceramic), skid bars, stiffeners...

Add a Sketch



## Dual Slope Truck Bed Liner Data Sheet



### End User Information

End User: \_\_\_\_\_

Address: \_\_\_\_\_

City: \_\_\_\_\_

State: \_\_\_\_\_ ZIP: \_\_\_\_\_

### Distributor Information

Distributor: \_\_\_\_\_

Contact: \_\_\_\_\_

Phone: \_\_\_\_\_

Fax: \_\_\_\_\_

### Technical Information

Is the Box Heated? **Yes** **No**

Indicate with an "X" on the Data Sheet where the heated exhaust enters the bed.

**Truck Make:** \_\_\_\_\_

**Truck Model:** \_\_\_\_\_

**Truck Series:** \_\_\_\_\_

**Notes:** \_\_\_\_\_

\_\_\_\_\_  
\_\_\_\_\_  
\_\_\_\_\_  
\_\_\_\_\_  
\_\_\_\_\_

For Assistance Please Call  
**1.800.622.5667**



## Flat Floor Truck Bed Liner Data Sheet

### End User Information

End User: \_\_\_\_\_

Address: \_\_\_\_\_

City: \_\_\_\_\_

State: \_\_\_\_\_ ZIP: \_\_\_\_\_

### Distributor Information

Distributor: \_\_\_\_\_

Contact: \_\_\_\_\_

Phone: \_\_\_\_\_

Fax: \_\_\_\_\_

### Technical Information

Is the Box Heated? **Yes** **No**

Indicate with an "X" on the Data Sheet where the heated exhaust enters the bed.

**Truck Make:**

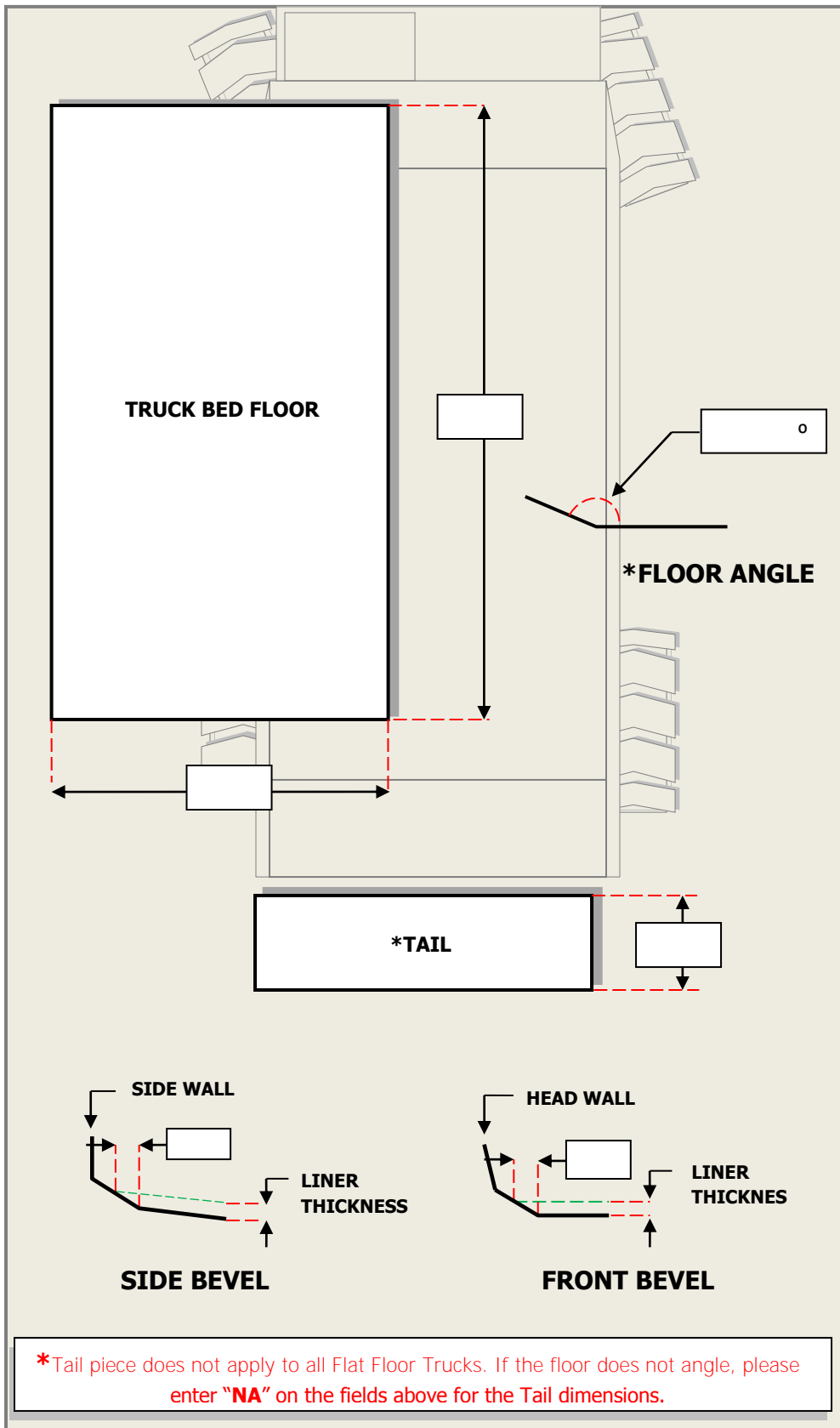
**Truck Model:**

**Truck Series:**

**Notes:** \_\_\_\_\_

\_\_\_\_\_  
\_\_\_\_\_  
\_\_\_\_\_  
\_\_\_\_\_

For Assistance Please Call  
**1.800.622.5667**



**TRUCK BED FLOOR**

**\*FLOOR ANGLE**

**\*TAIL**

**SIDE WALL**

**HEAD WALL**

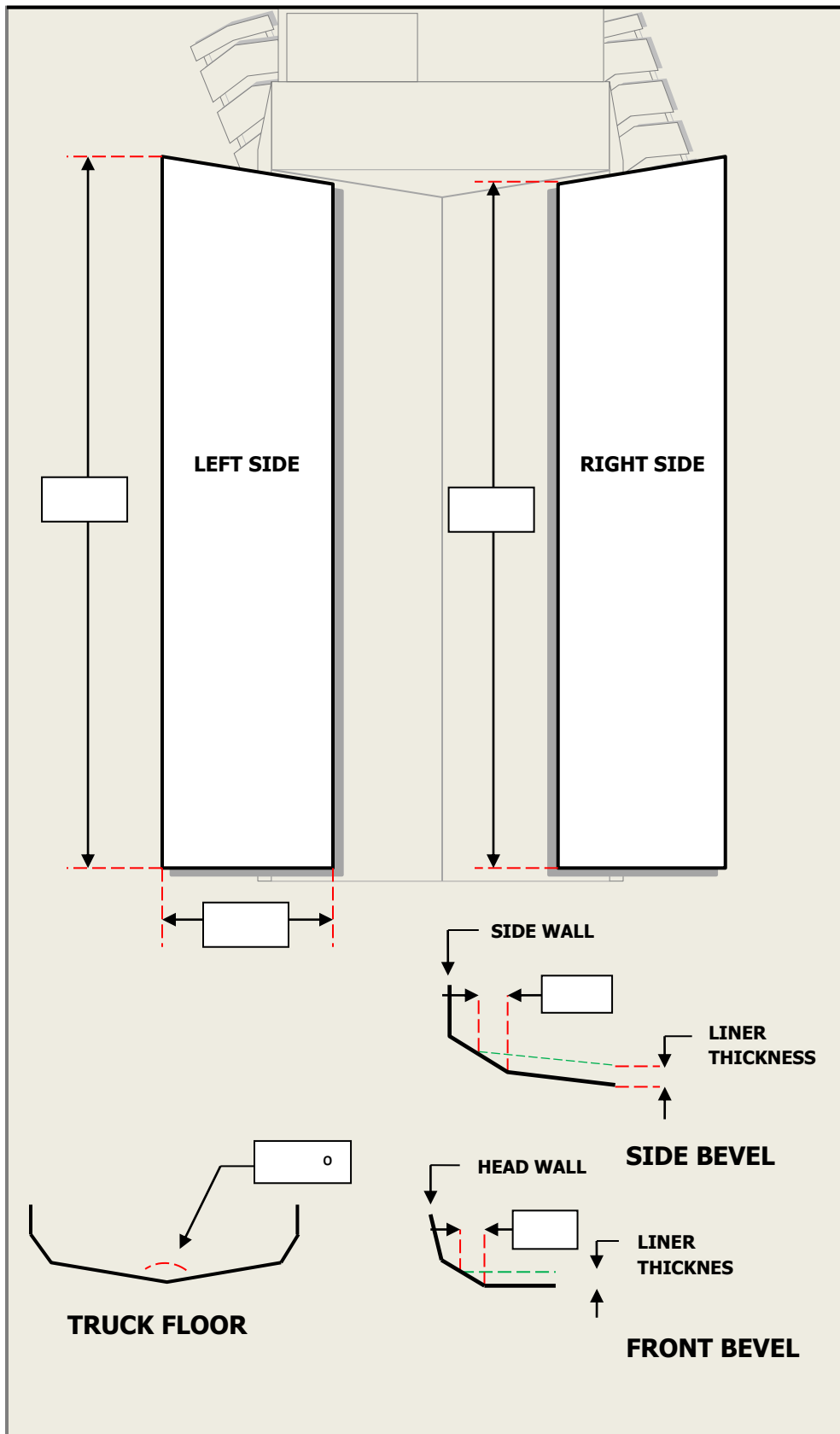
**LINER THICKNESS**

**SIDE BEVEL**

**FRONT BEVEL**

**\*Tail piece does not apply to all Flat Floor Trucks. If the floor does not angle, please enter "NA" on the fields above for the Tail dimensions.**

## "V" Bottom Truck Bed Liner Data Sheet



The diagram illustrates the installation of a "V" bottom truck bed liner. It includes the following components and labels:

- LEFT SIDE**: A large rectangular area representing the left side of the truck bed, with a vertical dimension line and a small rectangular box for data entry.
- RIGHT SIDE**: A large rectangular area representing the right side of the truck bed, with a vertical dimension line and a small rectangular box for data entry.
- TRUCK FLOOR**: A small diagram at the bottom left showing the "V" bottom shape of the truck bed floor, with a small rectangular box for data entry.
- SIDE WALL**: A detail view showing the side wall of the truck bed, with a small rectangular box for data entry.
- HEAD WALL**: A detail view showing the head wall of the truck bed, with a small rectangular box for data entry.
- SIDE BEVEL**: A detail view showing the side bevel of the truck bed, with a small rectangular box for data entry.
- FRONT BEVEL**: A detail view showing the front bevel of the truck bed, with a small rectangular box for data entry.
- LINER THICKNESS**: Labels indicating the thickness of the liner material on the side wall and front bevel.

### End User Information

End User: \_\_\_\_\_

Address: \_\_\_\_\_

City: \_\_\_\_\_

State: \_\_\_\_\_ ZIP: \_\_\_\_\_

### Distributor Information

Distributor: \_\_\_\_\_

Contact: \_\_\_\_\_

Phone: \_\_\_\_\_

Fax: \_\_\_\_\_

### Technical Information

Is the Box Heated? **Yes** **No**

Indicate with an "X" on the Data Sheet where the heated exhaust enters the bed.

**Truck Make:** \_\_\_\_\_

**Truck Model:** \_\_\_\_\_

**Truck Series:** \_\_\_\_\_

**Notes:** \_\_\_\_\_

\_\_\_\_\_  
\_\_\_\_\_  
\_\_\_\_\_  
\_\_\_\_\_  
\_\_\_\_\_

For Assistance Please Call  
**1.800.622.5667**